

Veronica O'Leary Visions: Wild and Remote

Ivy Hill Gallery 22 February - 25 March 2018



Swept Away-Cataraqui Coast
125 x 152 cm. oil on canvas \$3200



The height of Summer.
125 x 152 cm
synthetic polymer and oil on canvas \$3250



Storm at Sea
Panel 1. 71 x 71 cm
Synthetic polymer
paint on canvas
\$1200



Storm at sea.
Panel 2. 71 x 71 cm
Synthetic polymer on
canvas
\$1200



Storm at sea
Panel 3. 71x71cm
Synthetic polymer on
canvas
\$1200



Storm at sea
Panel 4. 71 x71cm
Synthetic polymer on
canvas
\$1200

Set of Four Panels
\$3600



Louring sky 153 x 102 cm
synthetic polymer and oil on canvas \$2,200



A Day on the Island
180 x 92cm. synthetic polymer on canvas
\$2,200



Morning on the kelp track
30 x 30cm synthetic polymer on
beechwood panel \$520



Last light at Clare's cottage
30 x 30cm synthetic polymer on
beechwood panel \$520



Wild weather ahead
30 x 30cm. synthetic
polymer on beechwood
panel \$520



Evening storm
30 x 30cm. synthetic polymer on
beechwood panel \$520



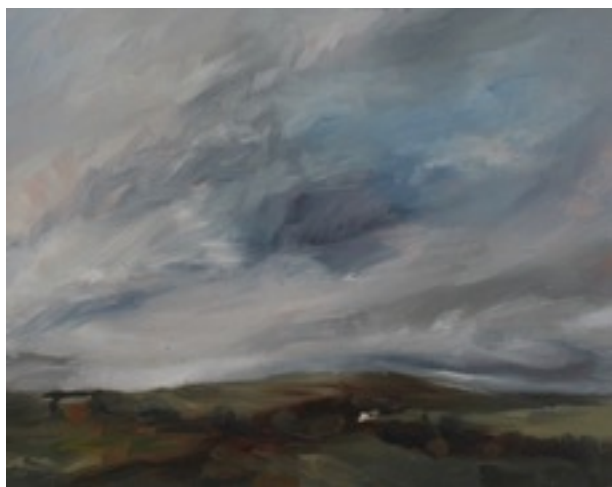
Autumn morning. King
Island
30 x 30cm
synthetic polymer on
beechwood panel
\$520



Winter Nocturne 1
20 x 25cm synthetic polymer on
beechwood panel \$280



Louring sky 2
20 x 25cm synthetic polymer on
beechwood panel \$280



Last light at Yellowrock
20 x 25cm synthetic polymer on
beechwood panel \$280



Remembering
20 x 25cm synthetic polymer on
beechwood panel \$280



Approaching Storm
20 x25cm synthetic polymer
on beechwood panel \$280



Summer evening on the Farm
20 x 25 cm synthetic polymer on
beechwood panel \$280



South Coast Beach Evening
25 x 20cm synthetic polymer on
beechwood panel \$280



Veronica O'Leary

The paintings in my exhibition focus on the dramatic moods of sea and sky. Many of the paintings are the result of two residencies living and working on King Island, Tasmania.

The specifics of particular landscapes are ignored in an attempt to characterize the dramatic and moody, the transient moods of changing sea and sky, and the brooding colours of wild storms in remote coastal places.

My colour palette moves between the intense cerulean blue of summer skies and the louring colours of winter days.



IVY HILL GALLERY

Open Thursday to Sunday 10 - 5

1795 Tathra Bermagui Road Wapengo 2550

02 6494 0152 www.ivyhill.com.au